



GRADING SPECIFICATIONS

SUPERIOR QUALITY

HISTORY, EXPERIENCE & DEDICATION CREATE HARDWOOD FLOORS OF THE HIGHEST QUALITY.

When we began manufacturing hardwood flooring it was our mission to consistently produce the highest quality wood flooring available. **We are proud to be NWFA/NOFMA certified;** a certification that provides an assurance that your wood flooring meets or exceeds industry standards for average board length, grade, configuration and moisture content.



Over the last 10 years, we have averaged

A 99.1% RATING

with NWFA/NOFMA, consistently

**EXCEEDING INDUSTRY
STANDARDS.**



QUALITY ABOVE ALL ELSE.

This symbol certifies that our engineered and enhanced floors are made with real wood and have a thick wear layer; providing more resilience and the ability to refinish in the future.



35 YEAR WARRANTY

We are so confident in the quality of our hardwood flooring that we offer an unprecedented 35 year warranty on the wear layer of pre-finished flooring, and a lifetime structural warranty.

SUPERIOR PRODUCTS

SOLID HARDWOOD

APPLICATION: Rooms on and above grade.

RANDOM BOARD LENGTHS: 10" to 90"

AVAILABLE IN: Smooth, Wire-brushed, and Hand scraped textures.



ENGINEERED HARDWOOD

APPLICATION: Above grade as well as condos, basements, safe to be applied on concrete, radiant heat and wood substrates.

RANDOM BOARD LENGTHS: 10" to 90"

AVAILABLE IN: Smooth, Wire-brushed and Hand scraped textures.



ENHANCED HARDWOOD

APPLICATION: Above grade as well as condos, basements, safe to be applied on concrete, radiant heat and wood substrates.

RANDOM BOARD LENGTHS: 10" to 90"

AVAILABLE IN: Smooth, Wire-brushed and Hand scraped textures.



SUPERIOR GRADES & LENGTHS

PREMIER GRADE

FEATURES:

- Some natural colour variation
- Slight tolerance in character marks, mineral streaking and pin knots
- No open knots, heavy mineral or character marks, stains, or checking

SELECT GRADE

FEATURES:

- Natural colour variation
- Mineral streaking, limited pin holes, small surface knots (no open knots) and checking
- Creates a floor full of visual texture

HERITAGE GRADE

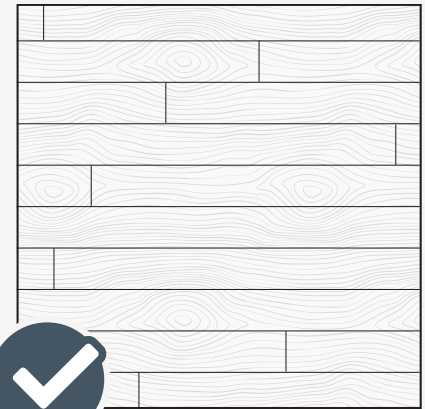
FEATURES:

- Allowance for pin holes, checking, heavy mineral streaking
- Large filled knots that can be up to two inches in diameter.
- Every Heritage Grade floor is unique, making it a great choice for those who want a diverse floor full of character.

SUPERIOR FLOORS

LENGTHS UP TO 90"

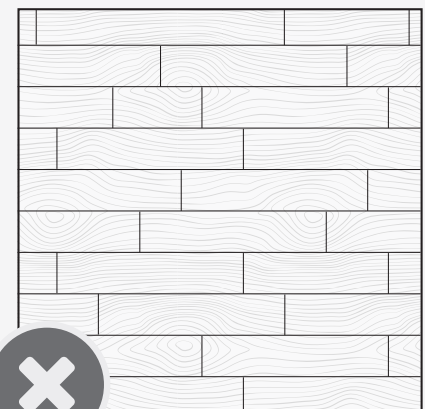
- Longer board lengths create a better looking floor
- Boxes are 90" long and never more than 3 boards in a row



INDUSTRY STANDARD

LENGTHS ONLY UP TO 72"

- Shorter boards means more joints, creating a visually busy floor
- More work to install with more boards





SOLID



**COLOUR
VARIATIONS**



PIN KNOTS



**MINERAL
STREAKS**

MAPLE
GRADE: PREMIER
JANKA HARDNESS: 1450

SOLID



MAPLE

GRADE: SELECT
JANKA HARDNESS: 1450



**CHARACTER
MARKS**



**COLOUR
VARIATIONS**



PIN KNOTS



**MINERAL
STREAKS**



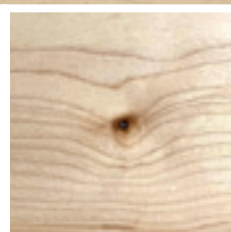
**ENGINEERED
& ENHANCED**



**CHARACTER
MARKS**



**COLOUR
VARIATIONS**



PIN KNOTS



**MINERAL
STREAKS**

MAPLE
GRADE: SELECT
JANKA HARDNESS: 1450

SOLID

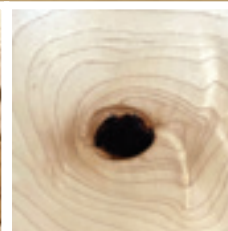


MAPLE

GRADE: HERITAGE
JANKA HARDNESS: 1450



**CHARACTER
MARKS**



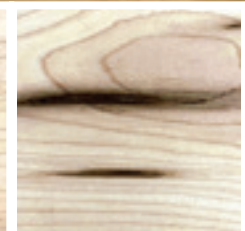
FILLED KNOTS



**COLOUR
VARIATIONS**



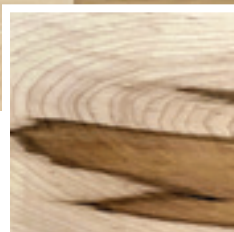
PIN KNOTS



**MINERAL
STREAKS**



**ENGINEERED
& ENHANCED**



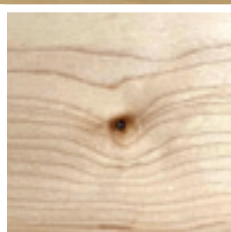
**CHARACTER
MARKS**



FILLED KNOTS



**COLOUR
VARIATIONS**



PIN KNOTS



**MINERAL
STREAKS**

MAPLE
GRADE: HERITAGE
JANKA HARDNESS: 1450

SOLID



RED OAK

GRADE: PREMIER

JANKA HARDNESS: 1290



**COLOUR
VARIATIONS**



PIN KNOTS



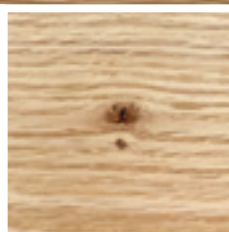
**MINERAL
STREAKS**



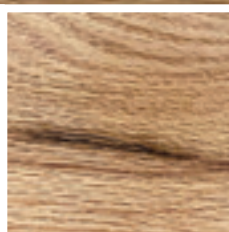
ENGINEERED



**COLOUR
VARIATIONS**



PIN KNOTS



**MINERAL
STREAKS**

RED OAK
GRADE: PREMIER
JANKA HARDNESS: 1290

SOLID



RED OAK

GRADE: HERITAGE

JANKA HARDNESS: 1290



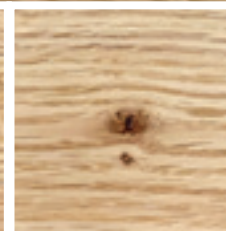
**CHARACTER
MARKS**



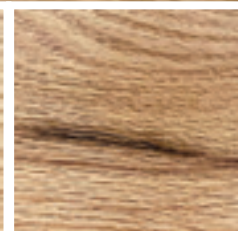
FILLED KNOTS



**COLOUR
VARIATIONS**



PIN KNOTS



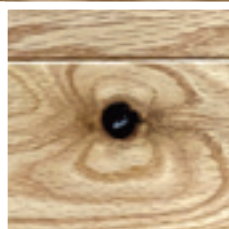
**MINERAL
STREAKS**



ENGINEERED



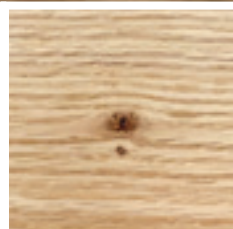
**CHARACTER
MARKS**



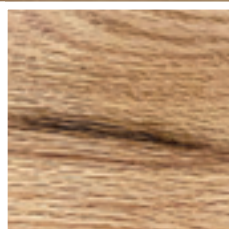
FILLED KNOTS



**COLOUR
VARIATIONS**



PIN KNOTS



**MINERAL
STREAKS**

RED OAK

GRADE: HERITAGE

JANKA HARDNESS: 1290

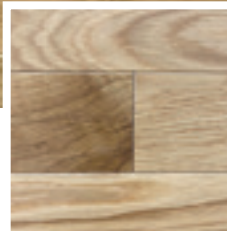
SOLID



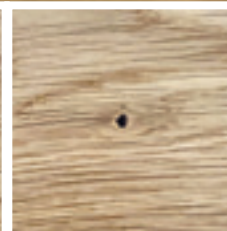
WHITE OAK

GRADE: PREMIER

JANKA HARDNESS: 1360



**COLOUR
VARIATIONS**



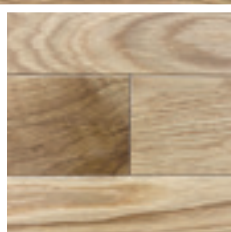
PIN KNOTS



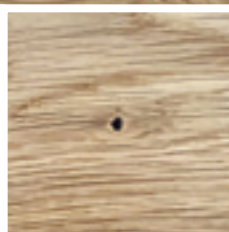
**MINERAL
STREAKS**



**ENGINEERED
& ENHANCED**



**COLOUR
VARIATIONS**



PIN KNOTS



**MINERAL
STREAKS**

WHITE OAK

GRADE: PREMIER

JANKA HARDNESS: 1360

SOLID



WHITE OAK

GRADE: HERITAGE

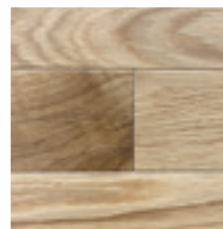
JANKA HARDNESS: 1360



**CHARACTER
MARKS**



FILLED KNOTS



**COLOUR
VARIATIONS**



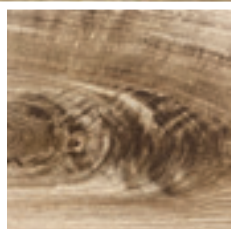
PIN KNOTS



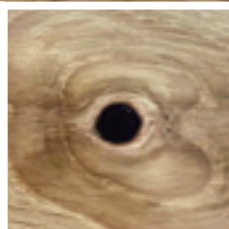
**MINERAL
STREAKS**



**ENGINEERED
& ENHANCED**



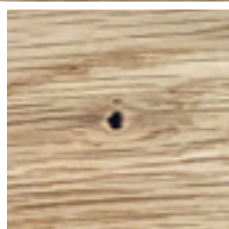
**CHARACTER
MARKS**



FILLED KNOTS



**COLOUR
VARIATIONS**



PIN KNOTS



**MINERAL
STREAKS**

WHITE OAK

GRADE: HERITAGE

JANKA HARDNESS: 1360

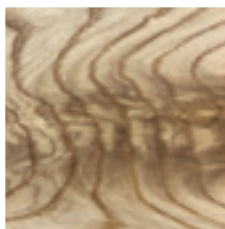
SOLID



ASH

GRADE: HERITAGE

JANKA HARDNESS: 1320



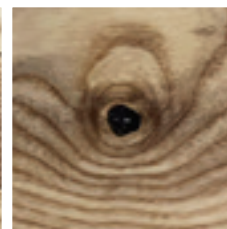
CHARACTER
MARKS



FILLED KNOTS



COLOUR
VARIATIONS



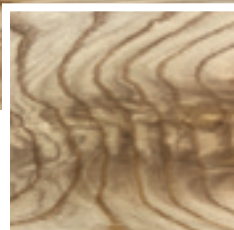
PIN KNOTS



MINERAL
STREAKS



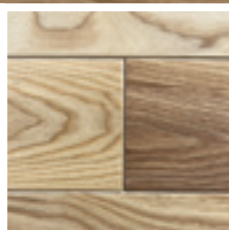
ENGINEERED



**CHARACTER
MARKS**



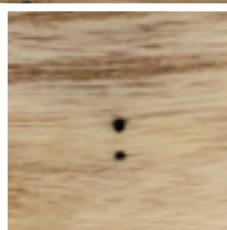
FILLED KNOTS



**COLOUR
VARIATIONS**



PIN KNOTS



**MINERAL
STREAKS**

ASH
GRADE: HERITAGE
JANKA HARDNESS: 1320

ENGINEERED



ASH

GRADE: PREMIER

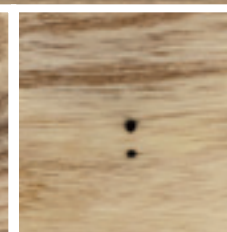
JANKA HARDNESS: 1320



**COLOUR
VARIATIONS**



PIN KNOTS



**MINERAL
STREAKS**



ENGINEERED



**COLOUR
VARIATIONS**



PIN KNOTS



**MINERAL
STREAKS**

HICKORY
GRADE: PREMIER
JANKA HARDNESS: 1820

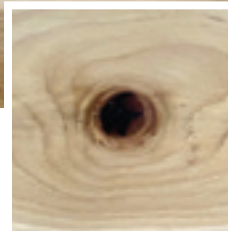
SOLID



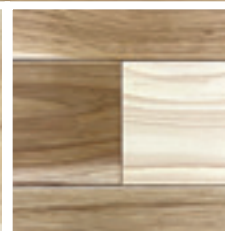
HICKORY

GRADE: HERITAGE

JANKA HARDNESS: 1820



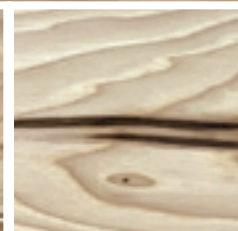
FILLED KNOTS



COLOUR
VARIATIONS



PIN KNOTS



MINERAL
STREAKS



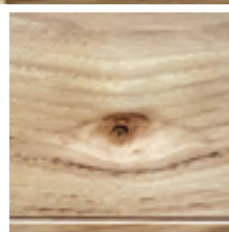
**ENGINEERED
& ENHANCED**



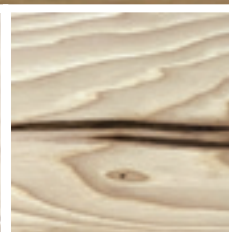
FILLED KNOTS



**COLOUR
VARIATIONS**



PIN KNOTS




**MINERAL
STREAKS**

HICKORY
GRADE: HERITAGE
JANKA HARDNESS: 1820




SUPERIORFLOORING.CA

 Superior Flooring by
Herwynen Sawmill LTD

 superiorhardwoodflooring

 superiorhardwoodflooring

 superiorhardwoodflooring

**Superior Flooring
Products Are Proudly**

